

## ColorLogic CoLiPri Version 2.1.2

### Installation

Please note that the CoLiPri PlugIns for Mac and PC platforms are located in the corresponding folders **Mac** and **Win** in the installation package. The installation itself is explained in the manual **CoLiPri\_2.0\_Manual\_EN.pdf**.

### New features

- The black point calculation has been optimized in such a way that if you enter a very high TAC value (**Total Amount of Color**), this TAC value will not be forced to be reached any more but might be reduced to reach a better fitting black point. In previous versions a TAC of 400% was kept even if for example a black point of 100 /98 / 84/ 100 was better.

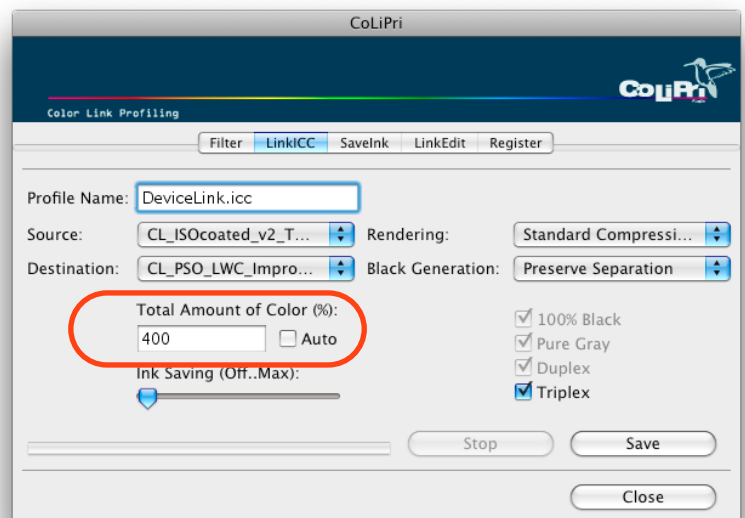
**Note:** The TAC reduction that CoLiPri will perform in rare circumstances will not exceed 40% below the users entry. In normal cases the TAC will not be reduced.

- Packaging customers working with Multicolor printing processes with CMYK + 5th, 6th or 7th process colors will benefit from a new feature within the **LinkEdit** functionality. This feature allows to create Multicolor-to-Multicolor DeviceLink profiles. Gradation corrections can be applied to special Edit Charts and saved as DeviceLink profiles. With CoLiPri's ability to be integrated in Photoshop actions this feature can be used to automatically apply Multicolor-to-Multicolor DeviceLink profiles on multi channel image files.

**Note:** This feature allows to build Multicolor-DeviceLink profiles having the same amount of input and output channels (e.g. 5-to-5-, 6-to-6- and 7-to-7-channel DeviceLink profiles). On the subsequent pages this new feature is explained in more detail. To use the feature a CoLiPri-Multicolor license is required.

### Bug fix

- The error that a defined TAC value was not respected in a special combination of rendering intent, exceptions and the **Black Generation** mode **Destination-Profil** has been fixed.

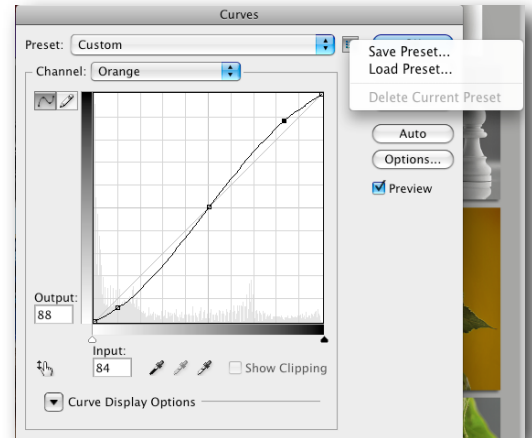


## Explanation of a Multicolor gradation correction on a 7 channel printing process

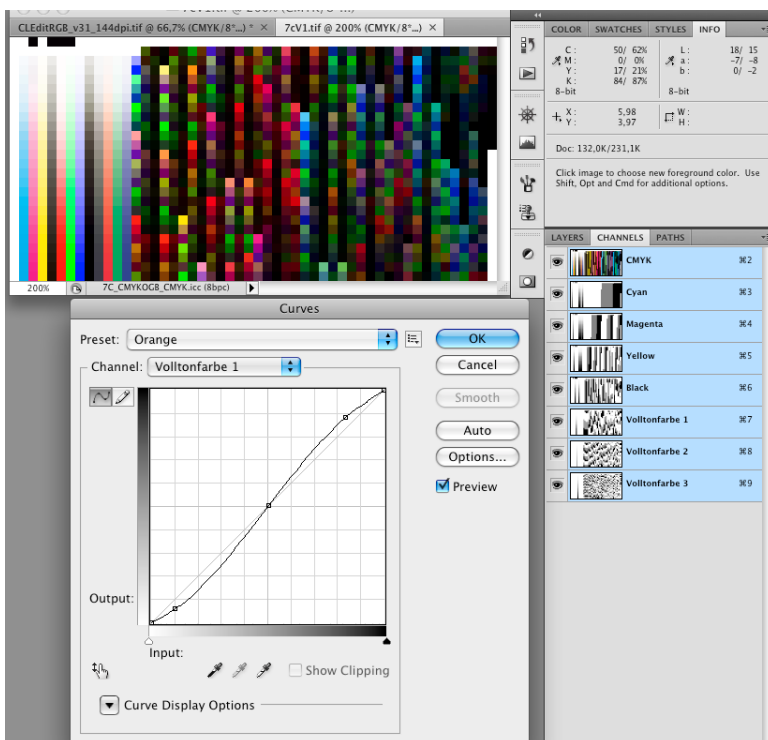
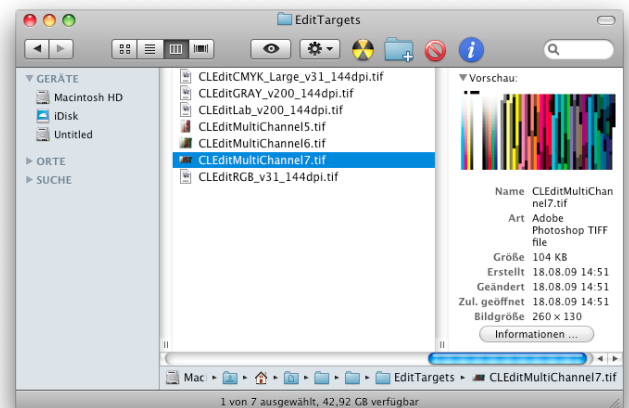
**Precondition:** In order to use the Multicolor functionalities of CoLiPri you need a premium Multicolor-license which can be purchased from your ColorLogic dealer. In addition for the workflow we are going to present, you would need image files already converted to 7 channels either by using a Multicolor printer profile or by using RGB- or CMYK-to-Multicolor DeviceLink profiles. Both profile types can be created with CoPra. In our example we have used a 7 channel ICC profile describing a CMYK+Orange+Green+Blue printing process.

1. Open up your 7 channel image in Photoshop and apply the desired gradation corrections or ton value changes needed for the final printing process on the image using the **Curves** tool. Save your curves as a preset as shown in the screenshot. The preset is needed to apply the same corrections to the **CLEditMultiChannel**-Edit-Chart in the next step.

**Note:** If you have already saved curves or if you wish to apply the curves directly to the Edit Chart you may skip this step.

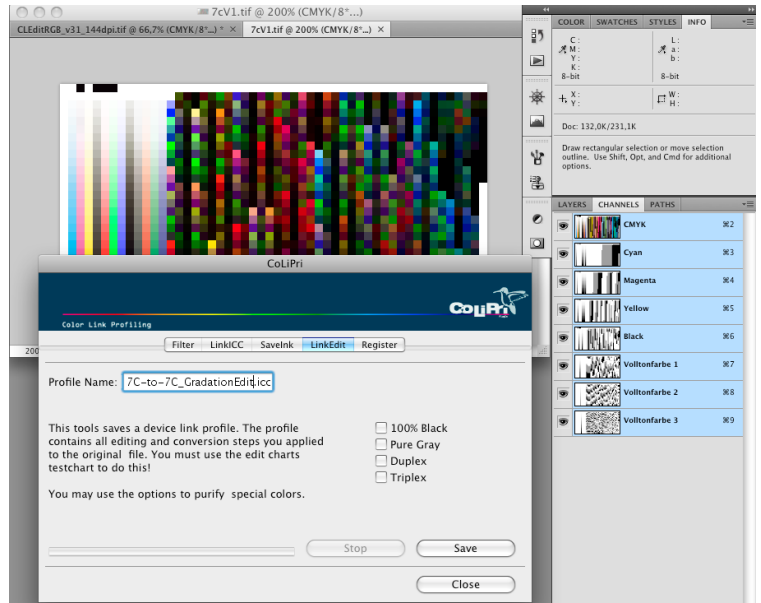


2. Open up the required Edit Chart for your printing process. In our case it will be the chart **CLEditMultiChannel7.tif**. All charts for 5, 6 or 7 channels can be found in the folder **EditTargets** inside the CoLiPri package.

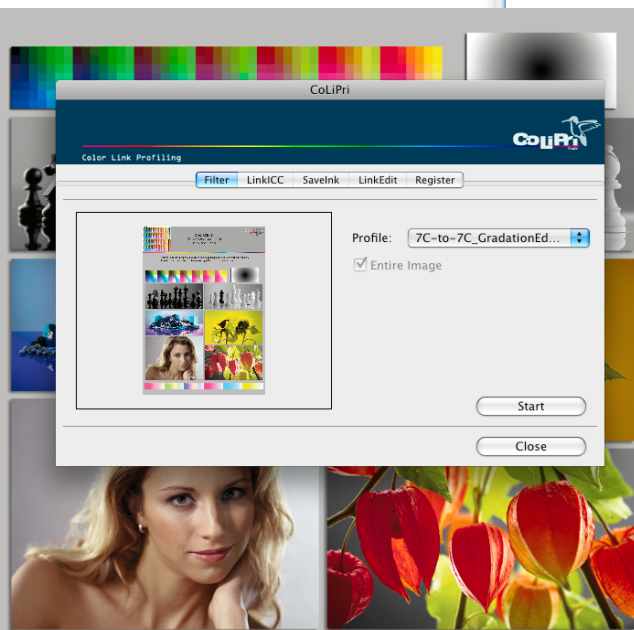
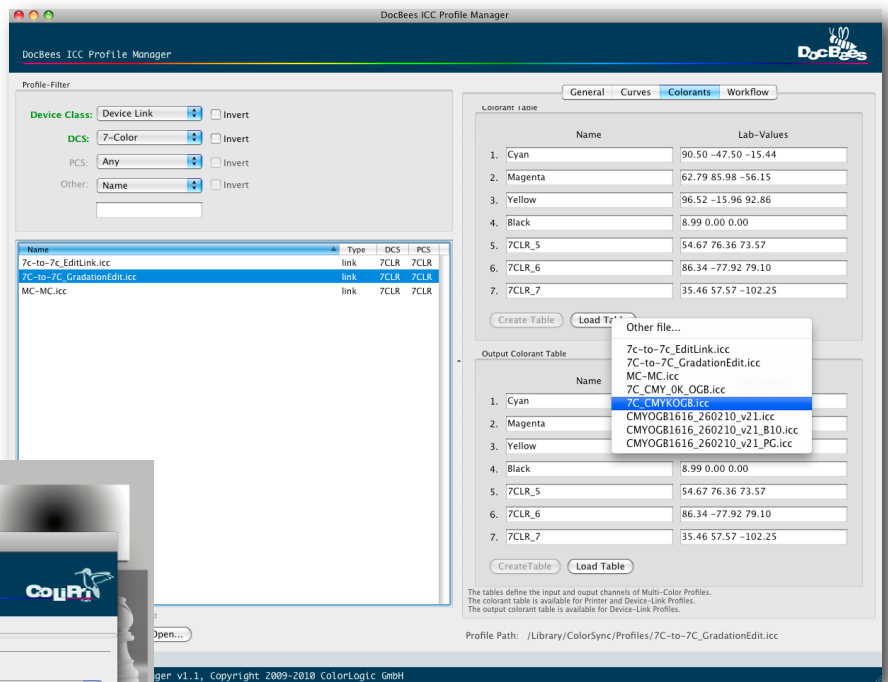


3. Now apply the desired curves on the Edit Chart. Depending if you wish to apply curves to all or only a few channels you need to preselect those channels in the **Channel** palette before opening the **Curves** window via **Image/Adjustments**. The screenshot shows the selection of the preset **Orange** applied on all channels and especially the first spot color channel **Volltonkanal 1** of the Edit-Chart. The naming of the channels is of no importance in this step.

4. After you have applied the gradation corrections to your Edit-Chart make sure to select all channels of the **CLEditMultiChannel7.tif** in the **Channel** palette before you open up the CoLiPri-PlugIn from the **Filter/ColoLogic** menu. Navigate to the tab **LinkEdit** und type in a profile name and click on **Save**. All your corrections will be saved in a 7-to-7 channel DeviceLink profile.



5. As a last step you need to make sure that the channel names and Lab color values used in the DeviceLink profile are correctly set. You can do this using DocBees Profile Manager (download the recent freeware tool from the [ColorLogic download page](#)). Select your DeviceLink and navigate to the **Colorants** tab as shown in the screenshot. To define the channel **Name** and **Lab Values** of the input channels use the **Load Table** button and select your 7 channel ICC printer profile used for the separation if you have one. If you do not have such a profile you need to type in the names and Lab values manually. As a final step just copy and paste the same names and Lab values to the area **Output Colorant Table** indicating the output channels of the profile.



6. Now you are finished and can apply the DeviceLink profile to your 7 channel images using the CoLiPri-**Filter** tab.

### Known limitations

- Since CoLiPri 2.0 Adobe Photoshop® CS2, 3 and 4 are supported. Older versions of Photoshop are no longer supported.
- The creation of RGB-to-CMYK DeviceLink profiles is currently not supported in the **LinkICC** tab. However the use of such DeviceLinks are possible in the **Filter** tab. You may create RGB-to-CMYK DeviceLinks with CoPrA.
- The Photoshop® filter technology does not permit us to transfer the assignment of color definitions or color names to the DeviceLink profile. Therefore, particularly in the case of MultiColor profiles with additional channels, ensure that you give the (Alpha) channels the required color names and LAB color definitions after conversion. You can use DocBees Profile Manager for this task as explained in the video tutorial.

### Key

Terms printed in **italics** are also to be found on the software's user interface.