

ColorLogic ZePrA Version 2.1

New Features

1. ZePrA 2.1 supports Photoshop PSD files for pixel images. 8 Bits and 16 Bits per channel are supported and clipping path information and XMP meta data are preserved when color converting. Important when saving PSD files is that you use the compatibility mode in Photoshop, otherwise ZePrA will not be able to color convert the file. Supporting PSD file enables a few advantages especially with multicolor conversion of pixel images. Now you can convert CMYK and RGB images without errors using a multicolor printer or DeviceLink profile that does not contain CMYK colors. TIFF and JPEG images are always saved as a PSD file in case of a multicolor target profile.

Note: Layers in PSD file will be deleted and the compatibility layer will be color converted. Deleting layers is the only color correct method of converting image files.

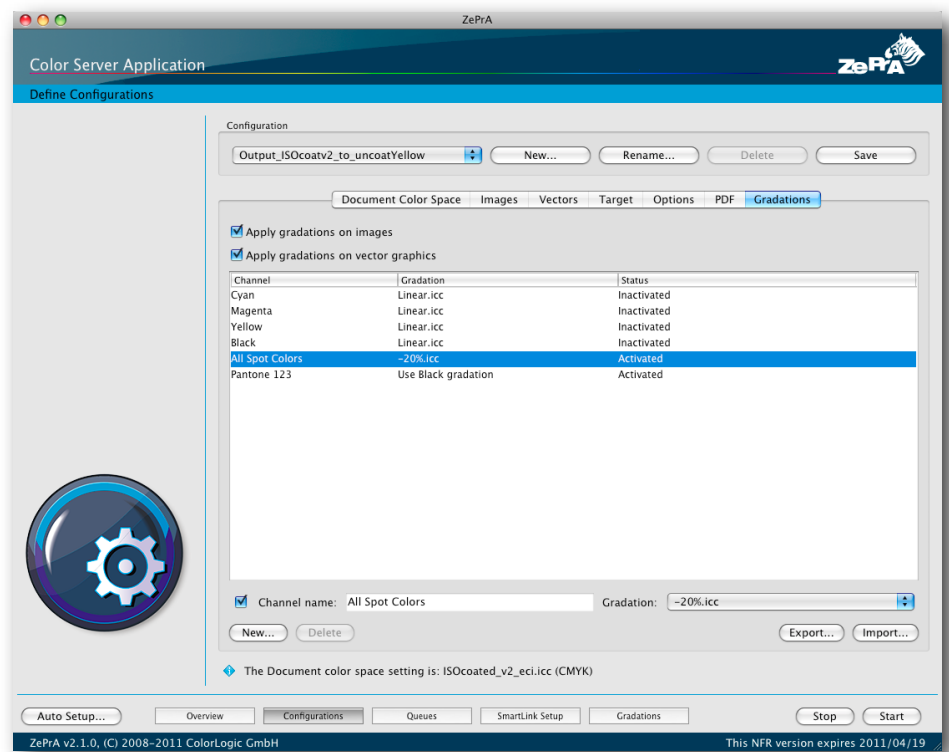
2. The **Configurations/Gradations** window has a new feature **All Spot Colors** that allows to apply the same gradation curve easily to all spot colors in a document. The new entry in the table can not be deleted as with the other fixed process colors.

If **All Spot Colors** is activated and a gradation curve selected all DeviceN spot color channels in the document will be adapted with the same curve.

Note: If you manually enter an additional spot color in the table and assign a different gradation curve that spot color has priority over the All Spot Colors gradation curve.

3. ZePrA 2.1 is more fault-tolerant about lower and upper case written spot color names. If for example a spot color channel in a document is written in upper case „PANTONE 123“ but in ZePrA the spot color is entered in lower case „pantone 123“ ZePrA will apply the selected gradation curve nonetheless.

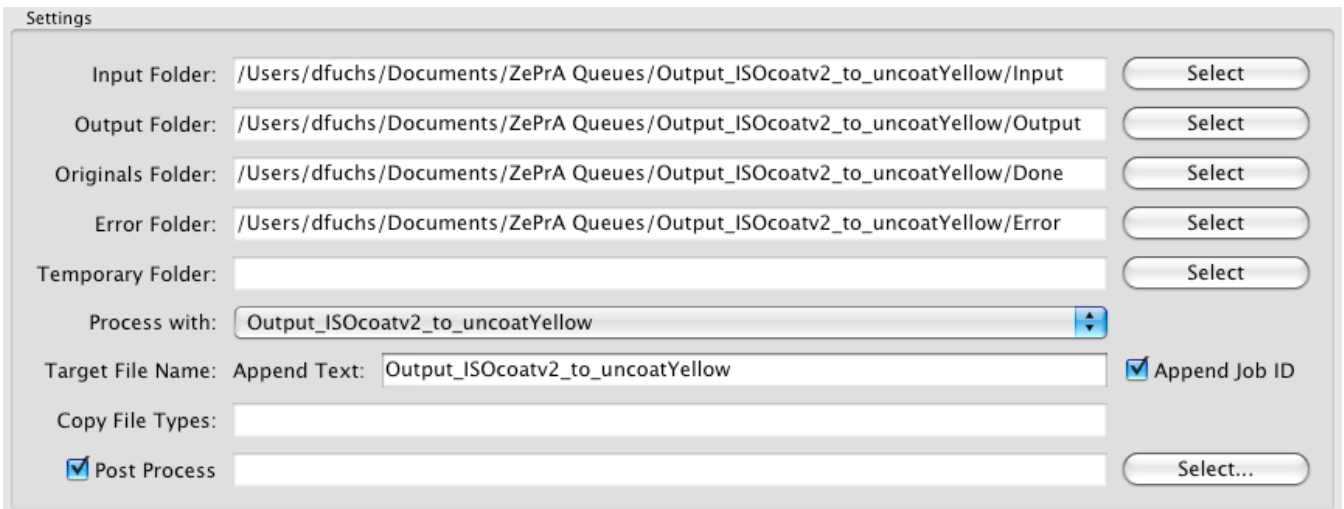
Note: Upper and lower case writing are still considered but ZePrA will be more tolerant if the syntax is not exactly the same.



4. With the new version it will be possible to apply gradation curves to process and spot color channels only without any upfront color management. This allows for last minute changes in the documents without changing the CTP curves.
5. In a support situation it is always advisable to collect some generic information about the ZePrA version including log and preset files and licensed features alongside the version of the operation system. To make this process easy, you just need to select the new entry **Save Support Data** in the **Help** menu, save the file and send it to your dealer together with a description of the issue itself.

Did you know...

...that each file color converted with ZePrA can automatically be opened in a Viewer or image editing application of your choice?



Settings

Input Folder: /Users/dfuchs/Documents/ZePrA Queues/Output_ISOcoatv2_to_uncoatYellow/Input Select

Output Folder: /Users/dfuchs/Documents/ZePrA Queues/Output_ISOcoatv2_to_uncoatYellow/Output Select

Originals Folder: /Users/dfuchs/Documents/ZePrA Queues/Output_ISOcoatv2_to_uncoatYellow/Done Select

Error Folder: /Users/dfuchs/Documents/ZePrA Queues/Output_ISOcoatv2_to_uncoatYellow/Error Select

Temporary Folder: Select

Process with: Output_ISOcoatv2_to_uncoatYellow

Target File Name: Append Text: Output_ISOcoatv2_to_uncoatYellow Append Job ID

Copy File Types: Select...

Post Process Select...

With the **Post Process** feature you may enable a separate processing for each file after color conversion in that particular queue in ZePrA. Select an application, a script or batch file or manually enter a command line expression in the text field. If you just enable the checkbox without selecting a script as shown in the screen shot each file running through that queue will be opened up with the application defined for opening the specific file type in your operating system (e.g. opening PDF files with Adobe Acrobat etc.). The **Post Process** feature is not available for Drag&Drop but only for queues. However with version 2.1 you may Drag&Drop files on a configured queue in the **Overview** dialog. If you have enabled a post processing option for that queue it will be applied after color conversion in ZePrA.

Fixed Bugs

- The issue that a multicolor license was needed to process TIFF and JPEG files has been solved.
- Demo licenses enable the CLI functionality so that ZePrA 2.1 can be tested in combination with Enfocus Switch.
- Fixed the bug that Gradations and SmartLink were not applied correctly in the CLI module (e.g. Switch)
- On MacOSX it was not possible to enter more than one DeviceLink profile in the **SmartLink Setup** dialog.
- The calculation of **ink savings** for each job has been optimized. It works now correctly for PDF files with multiple pages.
- Fixed the bug that **Export configuration** did not save the Drag&Drop queue rightly. In addition the settings and profiles of the LAB color space are exported correctly, too.
- The profile policies when loading DeviceLink profiles that are missing target profile information have been changed. In ZePrA 2.0 an ICC target profile was automatically selected in the configuration which could lead to an unwanted embedding of a profile in the converted files. ZePrA 2.1 will leave the **Target profile** chooser empty and will inform the user to select an appropriate profile.
Note: Even without target profile the configuration will work correctly and files can be processed. However no target profile will be embedded in the converted files.
- The option **Preserve overprinting effects if possible** has been enhanced for some rare DeviceN overprint situations.
- Drag&Drop on hot folder queues uses **Post Process** settings of that queue
- When post processing a file with a non default application, ZePrA no longer blocks until that application is terminated
- Fixed the issue on the Mac version that the **Post Process** feature required to select the binary of an application. Just select the application that you want to open the converted file with after processing in ZePrA 2.1.
- Fixed the bug that vector graphic was converted like images though vector graphic conversion was switched off in the GUI
- Vector graphic settings from an older ZePrA 1 version are correctly converted into ZePrA 2 settings

Legend

Words printed in **italic** are terms used in the graphical user interface of ZePrA.