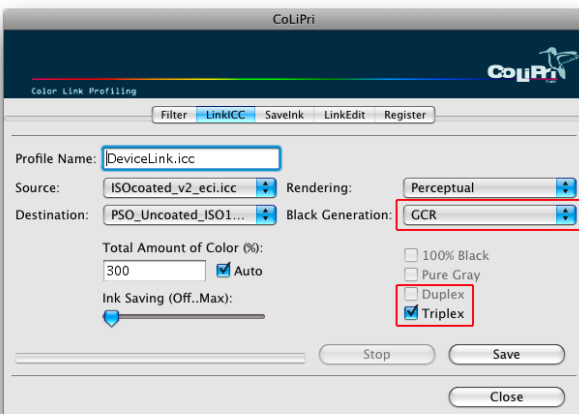
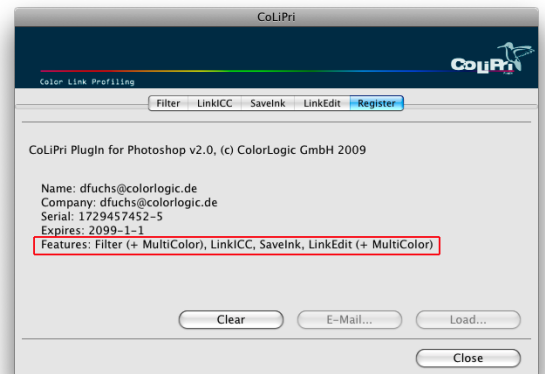


ColorLogic CoLiPri Version 2.0.1

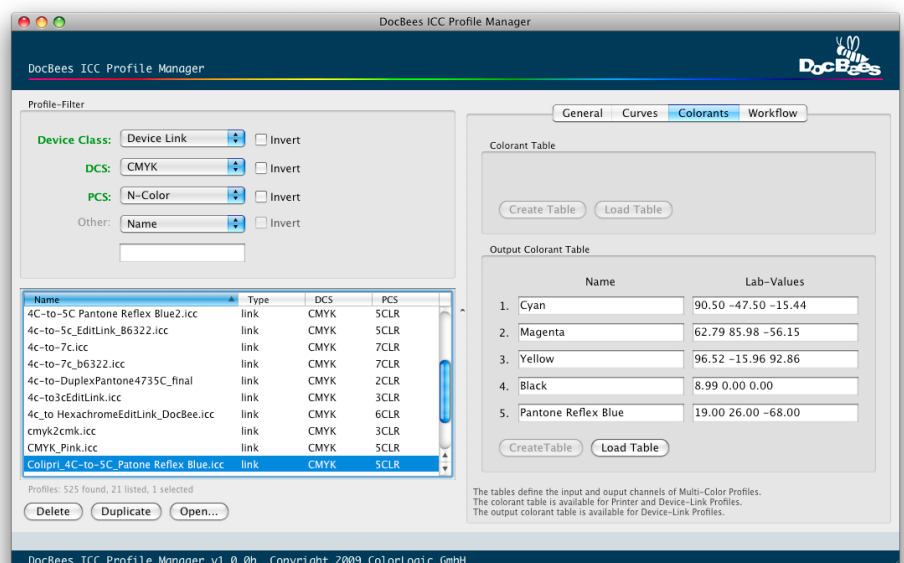
New features

1. The *Register* tab shows all the licensed features. The screenshot on the right illustrates how it would look like if all features including the MultiColor license are enabled.
2. The neighboring colors of *Duplex* and *Triplex* exceptions (see screenshot below) have been optimized in case a reparation DeviceLink using GCR or UCR will be created.



Note: When activating the *Triplex* option, secondary colors will automatically be purified. In addition the 100% secondaries (e.g. Red, Green, Blue) will be mapped to 100% in the destination color space. With activated *Triplex* option *Duplex* colors, the gray axis (*Pure Gray*) and 100% black are kept pure, too. Therefore these option are grayed out in the user interface.

3. A new tool has been added to the CoLiPri delivery: **DocBees ICC Profile Manager**. This tool allows to search and organize your profiles, allows to rename, delete and shows gray balance curves of printer profiles and many more curves of DeviceLink profiles. The most important feature however is the opportunity to change the channel names and color definition of MultiColor DeviceLink profiles created from CoLiPri.



4. The 2.0.1 package contains for the first time video tutorials explaining some of the functionalities of CoLiPri and DocBees Profile Manager. The tutorials explain the installation and use of the supplied Photoshop Actions, the creation and use of RGB-to-Duplex DeviceLink profiles and how to use DocBees Profile Manager to modify the colorants of MultiColor DeviceLink profiles.

Bug fixes

- It is now possible to use a recently created profile directly in the *Filter* tab without closing and restarting the CoLiPri PlugIn.
- In the *Filter* tab the *Ink Before*, *Ink After*, *Ink Change* values have been shown for RGB or MultiColor conversions, too. In version 2.0.1 this values are only shown for CMYK-to-CMYK conversions.
- The *Sample-Actions* for Photoshop delivered with CoLiPri 2.0 did only work correctly in the German Photoshop version. Now two separate actions for german and english Photoshop versions are available.

Known limitations

- Since CoLiPri 2.0 Adobe Photoshop® CS2, 3 and 4 are supported. Older versions of Photoshop are no longer supported.
- Do not use special characters or diacritics (umlaut) when naming profiles in CoLiPri. They are not displayed correctly.
- The creation of RGB-to-CMYK DeviceLink profiles is currently not supported in the *LinkICC* tab. However the use of such DeviceLinks are possible in the *Filter* tab. You may create RGB-to-CMYK DeviceLinks with CoPrA.
- The Photoshop® filter technology does not permit us to transfer the assignment of color definitions or color names to the DeviceLink profile. Therefore, particularly in the case of MultiColor profiles with additional channels, ensure that you give the (Alpha) channels the required color names and LAB color definitions after conversion. You can use DocBees Profile Manager for this task as explained in the video tutorial.

Key

Terms printed in *italics* are also to be found on the software's user interface.