

# PantoneLIVE

**PantoneLIVE®** by X-Rite is a cloud based solution for the digital storage of spectral spot colors. This applies both for Pantone Guides, paper-dependent, so-called 'Dependent Standards', as well as for specific color libraries of brand owners.

**Note:** The use of PantoneLIVE requires licenses for both the spot color module of ZePrA as well as PantoneLIVE from X-Rite. You may have to activate your licenses in your [My X-Rite](#) account for the use in ZePrA. The activation process will be explained further down this page.

To import your PantoneLIVE spot colors from the cloud into ZePrA, proceed as follows:

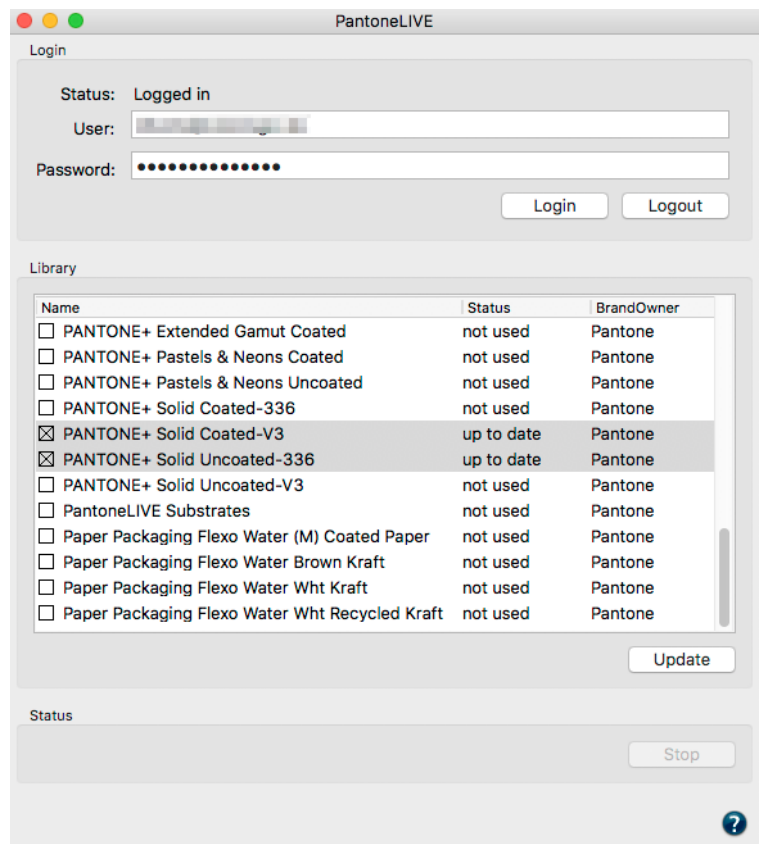
1. Select the tool **Spot Color Libraries** from the sidebar and click on **PantoneLIVE**.
2. In the **Login** dialog you can either login using the **User** name registered with Pantone or your e-mail address and your **Password**.

**Note:** The login requires an active Internet connection and an activated license for ZePrA.

3. Your libraries will be displayed after successfully logging in.
4. Select the libraries you would like to import and use in ZePrA by enabling the corresponding check boxes. Then click **Update**. The spot colors will be downloaded from the cloud while the progress is shown in the lower part of the window under **Status**.

**Note:** Depending on the number of selected spot colors and the speed of your internet connection this may take some time. The dialog cannot be closed during download.

5. Once the selected libraries have been downloaded, you can close the dialog. Your PantoneLIVE libraries are now displayed under **Library** and can easily be distinguished from other libraries by the Pantone icon.



## Characteristics and use of PantoneLIVE libraries

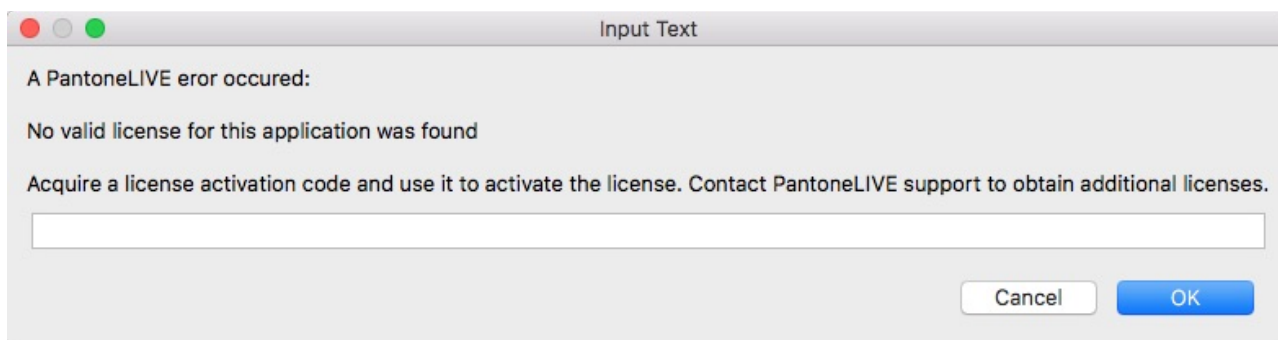
- Standard libraries can be edited in ZePrA, which means that spot colors can be copied, complemented, deleted or exported from one library to another. This is not intended for PantoneLIVE libraries and will be prevented by ZePrA.
- The revision number of PantoneLIVE libraries is displayed in the column **Information**. When the revision number changes, or when spot colors have been updated in the cloud, the **Status** of the affected libraries will change in the **PantoneLIVE** dialog from

**up-to-date** to **needs update**. In this case click on **Update** and your libraries will be updated in ZePrA.

- The **Expire Date** of a PantoneLIVE library shows how long it can be used in ZePrA. Typically, this is 30 days. The date is updated automatically as long as ZePrA is connected to the Internet without logout.
- If ZePrA is restarted without internet connection, PantoneLIVE libraries can no longer be used.
- The Lab values of PantoneLIVE spot colors are displayed as rounded numbers in ZePrA. Nevertheless, internally ZePrA calculates with full accuracy of the spectral measurement values.

## PantoneLIVE licenses in ZePrA

Your licenses for PantoneLIVE are computer and may even be application bound. If the computer (and ZePrA) is not enabled, you will receive the following error message in ZePrA (see screenshot):



To activate a PantoneLIVE license, open the page **My PantoneLIVE** of your [My X-Rite](#) account. The list with available licenses can be found at the bottom of the page. If an **Unused** license is present, click **Edit**. This opens the dialog for this license, and you have two options to activate it:

1. Activate the license by selecting **Use this activation yourself** and click on **Done**. In ZePrA, you can close the error message with **Cancel** and simply login again. Since the activation has already been done on the My X-Rite website, entering the activation code is not required.
2. Do not change anything on the **My PantoneLIVE** website, simply copy the **Activation Code** and paste it into the error message in ZePrA. Then close the dialog box with **OK**. In this case, ZePrA completes the activation. The activation may be visible only after re-login on the **My PantoneLIVE** page.

If no **Unused** license is available in the list of the **My PantoneLIVE** page, you can deactivate an existing **Used** license changing its status to **Unused**. Then apply the same steps as described above for the **Unused** license. This procedure can also be used to move a license to another computer or to change the application.

In case of problems please contact your PantoneLIVE support.